

FabDAILY

BEAUTY & CELEBRITY

THE FAB DAILY TEAM: Deputy Editor Joel Cooper, Fashion Editor Clemmie Fieldsend, Senior Feature Writer Claire Dunwell, Feature Writer Yasmin Harisha, Fashion Writer and Stylist Abby McHale, Contributing Editor Nikki Watkins



Edited by **LYNSEY CLARKE**

Celeb hairdresser **ANDREW BARTON** gives no-nonsense advice on getting the best parting for any face shape and reveals common mistakes...

DOs & DON'TS



A-LIST CLIENTS . . . Among other big names, Andrew has styled the hair of models Cindy Crawford and Elle Macpherson

DRAMATIC PARTINGS CAN AGE YOU

ANDREW says: "Whether it's in the centre or to the side, a dramatic parting can age you – unless you can afford to have your roots touched up every few weeks. While it's a classic look, it can also drag the face downwards which is ageing. Styling is also important – hair worn loose with soft movement rather than poker-straight is more youthful, generally."

SHOW OFF YOUR BEST SIDE

MANY of us have asymmetrical faces and as we mature, our eyes may not stay symmetrical – so whichever side you're wider eye is on, part your hair on the opposite. Andrew says: "Having your hair sweep this way will emphasise the wider eye, and wider eyes give the face the appearance of youth."

NARROW FACES SUIT SIDE PARTINGS

NOT sure what your face shape is? There are other ways you can guarantee a strong parting. Andrew says: "There are generally two rules of thumb. If the face shape is narrow, it suits partings from the side with fullness in the style to balance the angles. If a face is fuller, it suits styles with more lift and an off-centre parting."

ZIG-ZAG PARTINGS TAKE YEARS OFF

WE'RE not talking Nineties vibes, but a messy, subtle zig-zag parting can work wonders. You start with a centre parting and then flick a section of hair from the left over to the right using the tail of the comb, and vice versa. Andrew says: "The slightly messy, jagged look will soften your features, making you look younger. It also makes the hair look thicker, adding volume."

CONSIDER YOUR BODY AND PROFILE

IT'S not just your face shape you should think about when choosing a parting. Andrew says: "A hair stylist should consider face shape but also body shape, profile and head shape when designing a style and these things should be considered for a parting."

LIPSTICK TRICK TO FIND FACE SHAPE

IT'S sometimes hard to see your true face shape when your hair is styled. Andrew suggests pulling it back off your face. He says: "Look in a mirror with your hair pulled back from your face, then with lipstick draw the reflection around your face on to the mirror."

As told to **YASMIN HARISHA**

'If the face shape is narrow, part your hair on the side'



WHY YOU'RE PARTING YOUR HAIR ALL WRONG



Round **Jodie Turner-Smith**

NO PARTING: Round faces benefit from styles adding fullness on top to suggest height – a subtle parting slightly lifted, hair tied back or backcombed, or no parting at all like actress Jodie, 35. Avoid flatter styles with dramatic partings as they emphasise the roundness, rather than create the illusion of a more balanced oval.



Diamond **Holly Willoughby**

SIDE SWEEP: Diamond face shapes like TV's Holly, 41, have a narrow forehead and chin or jawline. A side-swept parting works – as does a slight side-swept fringe, with a bit of a lift at the parting. This gives the illusion of a wider brow and forehead. Avoid fullness around the cheeks and keep texture and movement.



Oblong **Anita Rani**

DEEP SIDE: Oblong or rectangular faces suit bangs swept at each side of an off-centre parting. It's about balancing the length of the face, to complement it rather than elongate. Radio and TV presenter Anita, 44, knows her angles perfectly and this deep side-parting with fuller waves is perfect for her.



Oval **Duchess of Cambridge**

MIDDLE PART: An oval face's symmetry means any hairstyle will work. It's the shape stylists try to emulate in designing cuts. However the Duchess, 40, has her hair, she looks perfect. This year she has started parting it in the centre more often but her everyday style is fuller and looser which suits her frame.



Heart **Emma Willis**

MESSY SIDE: Fuller at the forehead, narrower at the chin, a heart face shape suits partings that keep hair close to the face, rather than pulling it back to reveal more forehead. Presenter Emma, 46, often opts for a side parting with hair worn around the face at one side and lifted off at the other. It accentuates her features.



Square **Andie MacDowell**

SOFT SIDE: For square faces, soften angles. Layered cuts that start from a gentle side parting work, especially when styled with movement. Actress Andie, 64, with her natural grey, curly locks, is an example. Waved hair, swept over from a side parting, lends softness and symmetry and shows off her cheekbones.



JEEPERS PEEPERS . . . Megan Fox, Bella Hadid and Kendall Jenner inspired fox eye trend

'I TOOK IT OUT ON BOYFRIEND'

From previous page

to them, and some worse off than me. Someone I spoke to nearly got sepsis. It is actually so dangerous."

According to aestheticians, the number of thread lift procedures being performed are at an all-time high. Data from clinics such as Essex's Vie Aesthetics have seen the number of fox eye lifts more than triple since 2019.

Save Face, which runs a register of non-surgical practitioners, has received hundreds of complaints about problems from this type of procedure in the past two years.

Dr Omar Tillo, a plastic surgeon and founder of Creo clinic, says: "Major complications include bleeding, double vision, inability to close the eye, severe infections and blindness. Minor complications include asymmetry, which is very common."

'I'm in a bad place'

"To avoid such complications, check that they (your practitioner) are board-certified and registered plastic surgeons and that they have good experience doing this surgery on a regular basis."

Chloe's mental health has been badly affected too, and it has even caused her to take a break from her relationship with boyfriend Johnny Wilbo, 24, an MMA fighter, who she began dating last year.

The owner of her own make-up range, Chloe Ferry Cosmetics, she adds: "I often film myself without make-up for tutorials and now I feel I can't do that. It's just so frustrating. It has affected my life and even my relationship."

"Me and Johnny went through a bad time because of what happened to my face. I was pushing him away."

"Everyone is asking if I

BIG REGRETS . . . Chloe

CHOOSE THREADING EXPERT

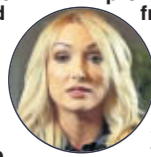
DIRECTOR at Save Face, Ashton Collins, pictured, says: "Anyone considering a thread lift should only seek out an appropriately trained and insured healthcare professional."

"Although it is non-surgical, because of the invasiveness, thread lifts are a Care Quality Commission (CQC) registrable treatment, however, the regulation only extends to a limited group of

healthcare professionals, it doesn't prevent the untrained and uninsured from setting up as providers.

"More than 80 per cent of the complaints we receive are over-treatments carried out by non-medics and because they are unaccountable, redress is very unlikely."

Visit saveface.co.uk to find a fully qualified medical professional you can trust.



Almond **Maya Jama**

OFF-CENTRE: An almond face shape, which is similar to oval but with a narrower jawline, is pretty versatile but gentle partings which are slightly offset and diagonal – adding height towards the back of the parting towards the crown – work well. As you can see with presenter Maya, 28, this subtly styled look brings the face front and centre and accentuates the shape.